

+34 634 74 91 60



info@spainhome.net

Apartment in Atalaya

Reference: R3556531



Bedrooms: 2

Bathrooms: 2

M²: 102

Price: 0 €

Rent: 0 € / Month

Short Rent:

from 1,800 to 2,100 € /

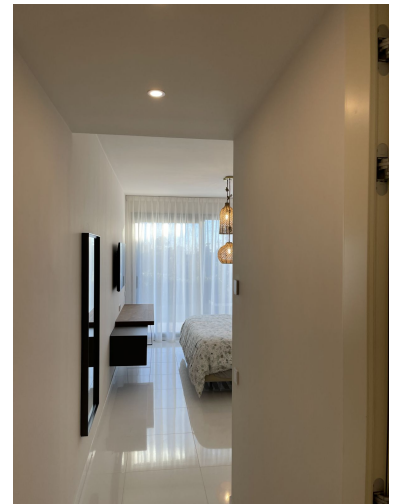
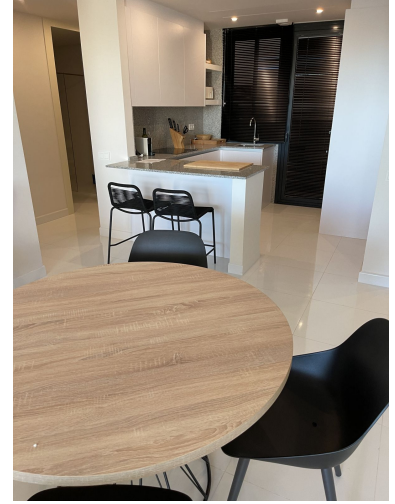
Week

Status: Rent, Vacational

Property Type: Apartment

Parking places: by request

Printing day : 4th May 2026



Overview:5* Luxury and contemporary (new fully furnished) front golf garden apartment and best deal in Atalaya Hills. The avant-garde architecture is designed by the famous architects Villarroel - Torrico @ Puente Romano Marbella. The setting is unique and just in front of Atalaya Golf (36 holes) with unobstructed panoramic south orientated views, overlooking 180° the golf courses, lake. Atalaya driving range is literally at your doorstep. The quiet and front golf location is unbeatable. Situated at the end of a cull the sack (Atalaya Golf course and driving range) between all-new luxury contemporary villa's in the exclusive secured urbanisation of La Alqueria - Benahavis, 6 minutes to Puerto Banus, 10 minutes to Marbella, 12 minutes to Estepona, 2 minutes to a very nice "Mercadona" supermarket and International School & College. The master bedroom has a wardrobe and bathroom with Porcelanosa design and massage bath. All bright rooms have high ceilings and large sliding doors with direct access to the gardens and sun. The thermic and sound insulation is of very good standards. Atalaya Hills consist of 66 luxury apartments nestled in a state of the art landscaped " lavender, jasmine and dame de noche scented " gardens. It offers a large infinity pool with " Chiringuito" bar and lounge area with self-serviced fridges and wifi. The professional Gym is completely designed by Technogym. Large SPA with sauna, hammam and shower area. The area is secured by Malaca patrol and has camera control. Ground Floor Apartment, Atalaya, Costa del Sol. 2 Bedrooms, 2 Bathrooms, Built 102 m², Terrace 33 m². Setting : Frontline Golf, Commercial Area, Close To Golf, Close To Port, Close To Shops, Close To Sea, Close To Town, Close To Schools, Close To Forest, Close To Marina, Urbanisation. Orientation : South. Condition : Excellent. Pool : Communal. Climate Control : Air Conditioning, Pre Installed A/C, Hot A/C, Cold A/C, U/F/H Bathrooms. Views : Golf, Panoramic, Garden, Lake. Features : Covered Terrace, Lift, Fitted Wardrobes, Near Transport, Private Terrace, Solarium, Satellite TV, ADSL / WIFI, Gym, Sauna, Storage Room, Utility Room, Ensuite Bathroom, Disabled Access, Jacuzzi, Bar, Double Glazing, Domotics, Basement, Fiber Optic. Furniture : Fully Furnished. Kitchen : Fully Fitted. Garden : Communal, Landscaped. Security : Gated Complex, Electric Blinds, Entry Phone. Parking : Underground, Garage, Covered, Private. Utilities : Electricity, Drinkable Water, Telephone. Category : Bargain, Cheap, Golf, Investment, Luxury, Reduced, Contemporary.

Features:

None, Pool, Air conditioning, Heating, Private garden, Lift, None, Parking, Luxury