

Terraced Townhouse in Nueva Andalucía

Reference: R3907003



Bedrooms: 4

Bathrooms: 3

M²: 202

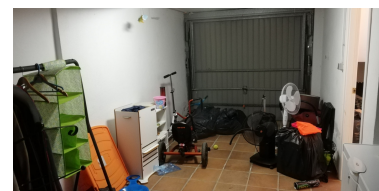
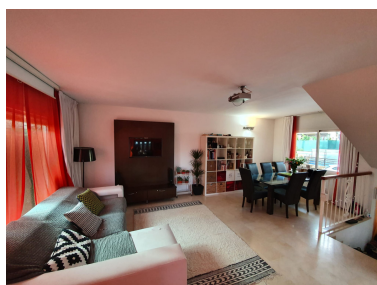
Price: 340,000 €

Status: Sale

Property Type: Terraced
Townhouse

Parking places: by request

Printing day : 19th April
2026





Overview: CONDES DE IZA Location description: Condes De Iza is a delightful residential complex situated in an area know as Altos de Rodeo, approx 2 miles north west of the famous Jet-set marina in Puerto Banus and 10min drive away from San Pedro & Marbella. It is 60 mins drive to Malaga airport. Within a very short drive are some of Europe's most prestigious Golf Courses. A tranquil oasis yet close proximity to every amenity, making it an ideal location for a family. Built in 1999 and designed by the famous architect Melvin Villarroel, it is Mediterranean inspired with Spanish style buildings & attractive landscaped squares with fountains. A walled & gated community, this is a residential complex of 126 privately owned houses with entrances exclusive to the owners. Each house has its own garage & small individual garden setting and a lovely sun terrace/ solarium on the roof. Also in the complex are 2 pools with poolside loungers for residents. Description: This attractive spacious semi detached 3 to 4 BED ROOMED townhouse (plot 128 m2). Situated in a terrace of 4 houses, well designed with 3 levels. The built area is approx 218 m2 includes Garage & roof solarium. Then terracotta patio & garden area's areas are 77m2. The House comprises of the following: On the 1st level: Entrance hall with a Cloakroom on the left (with toilet & wash hand basin) . There are steps up to the main open-plan living & dining area & kitchen PLUS steps down to Semi basement. The bright, spacious 'L' shaped living room area is open plan with dining area, working fireplace, 2 sets of large French doors (not sliding doors) leading to a terracotta tiled patio area with views of La Concha mountain. There is a separate fully fitted kitchen with; ceramic hob; oven; fridge/freezer. There is a serving hatch from the kitchen to the dining area. At lower ground level: Downstairs; semi-basement & garage, lock-up Store room, separate Utility room plumbed for washing machine. Also there is a separate room with window, with a marble ensuite shower room. This room could be used as a 4th bedroom/games room/study etc. On the 2nd level: 3 double bedrooms, the master bedroom has a small balcony (views of La Concha mountain) also with a full en-suite marble bathroom with bath/shower. There is also a separate full guest marble bathroom with bath/shower. On the 3rd level: Large roof solarium.

Features: